

mod. **CPR-RP**  
single jet -wet dial protected rolls

CE M08 1383

2004/22/CE (MID)



## Mod. CPR-RP

Getto unico, quadrante bagnato a rulli protetti, trasmissione meccanica, con anello di chiusura a pressione e girevole a 360°. Realizzato nelle versioni per acqua fredda (30° C) e acqua calda (90° C) nei calibri  $\varnothing$  15 e 20 mm (1/2"-3/4"). I rulli sigillati in una capsula con liquido speciale permettono la lettura sempre nitida anche in presenza di acque impure. La trasmissione meccanica rende il contatore non frodabile da campi magnetici. Contatore omologato a norme **MID**.

## Mod. CPR-RP

Single jet, wet dial with protected rolls meter, mechanical driving, with pressure closing ring revolving at 360°. Available in sizes 1/2" and 3/4" either for cold water (30°C) and hot water (90°C). The rolls are dipped in a liquid filled chamber, allowing the reading even with unclear water. The mechanical driving allows the meter not to be tampered by magnetic fields. Approved according to **MID** standards.

## Mod. CPR-RP

Chorro único, esfera húmeda con rodillos protegidos con anillos de cierre a presión y giratorios a 360°. Realizados en las versiones para agua fría (30°C) y agua caliente (90°C) en los calibres 15 y 20 mm. ( 1/2" - 3/4" ). Los rodillos, sellados herméticamente en una cápsula con un líquido especial, permiten una lectura siempre nítida, también en presencia de impurezas del agua. La transmisión mecánica confiere al contador la cualidad anti-fraude a los campos magnéticos. Contador homologado por las normas **MID**.

## Mod. CPR-RP

Einzelwasserstrahl, Nassläufer mit geschützten Zählwerksrollen, mit 360° drehbaren Druck Schliessungsring. Erzeugt in der Ausführung für Kaltwasser (30°) und Warmwasser (90°), Innendurchmesser  $\varnothing$  15 und 20 mm (1/2" – 3/4"). Die in einer mit besonderer Flüssigkeit gefüllten Kapsel versiegelte Rolle erlauben die scharfe Ablesung, ebenso mit unsauberem Wasser. Mechanische Übertragung schützt den Zähler vom Betrug durch magnetische Felde. Zugelassener Zähler für **MID** Standards.

## Мод. CPR-RP

Одноструйный, мокроходный с роликами, защищенными посредством запорного кольца под давлением, и с вращаемым на 360° циферблатом. Используется для холодной (30°C) и горячей (90°C) воды. Диаметр условного прохода составляет 15 и 20 мм (1/2"-3/4"). Ролики, запечатанные в капсулу со специальной жидкостью, поддерживают точность считывания даже в условиях загрязненной воды. Механическая передача позволяет избежать воздействия магнитных явлений. Счетчик сертифицирован в соответствии с нормами **MID**.

## Caratteristiche tecniche - Technical features

Modello contatore Meter type			CPR-RP 1.6	CPR-RP 2.5
Diametro nominale Nominal Diameter	DN	mm in	15 (1/2")	20 (3/4")
Portata minima Minimum Flowrate	Q <sub>1</sub>	l/h	32	50
Portata di transizione Transitional Flowrate	Q <sub>2</sub>	l/h	51	80
Portata nominale Permanent Flowrate	Q <sub>3</sub>	m <sup>3</sup> /h	1,6	2,5
Portata massima Overload Flowrate	Q <sub>4</sub>	m <sup>3</sup> /h	2	3,13
Rapporto Q <sub>3</sub> / Q <sub>1</sub> Ratio Q <sub>3</sub> / Q <sub>1</sub>		Range	H=50 V=20	
Classe di accuratezza Accuracy class			2	
Classe temperatura Temperature class		°C	30 – 30/90	
Pressione massima ammissibile MAP Maximum admissible pressure MAP		bar	16	
Perdita di pressione Δp Pressure loss		bar	0,25	0,40
Lettura massima Max reading		m <sup>3</sup>	99999	
Lettura minima Min. reading		l	0,05	

H=Montaggio orizzontale H=Horizontal position  
V=Montaggio verticale V=Vertical position

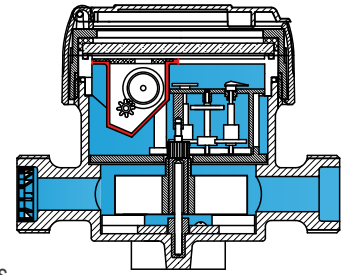
Acqua fredda 0° - 30°C  
Cold water 0° - 30°C

Acqua calda 30° - 90°C  
Hot water 30° - 90°C

Trascinamento meccanico  
Mechanical transmission

Lettura diretta su rulli protetti  
Immediate reading in protect rolls

Quadrante bagnato  
Wet dial



Coperchio in plastica  
Plastic Lid

Anello di chiusura in ottone  
Brass sealing ring

Vetro  
Glass

Turbina  
Turbine

Filtro  
Strainer

Anello antifrode ruotabile 360°  
Antifrodable ring rotatable 360°

Orologeria  
Totalising mechanism

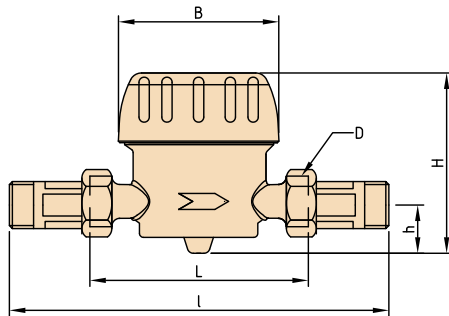
Guarnizione  
Gasket

Perno di base  
Pivot

Regolatore flusso  
Flux regulator

Cassa ottone  
Brass body

## Dimensioni e pesi - Dimensions and weights



Calibro Size	mm in	15 1/2"	20 3/4"	
L	mm	110	130	
l	mm	190	228	
H	mm	86	86	
h	mm	23	23	
B	mm	82	82	
d	in	3/4"	1"	
Pesi Weights	con raccordi with unions	Kg	0,83 (0,90)	1,01
	senza raccordi without unions	Kg	0,69 (0,75)	0,80

## Curva tipica degli errori dei contatori a turbina Typical error curve of turbine meters

